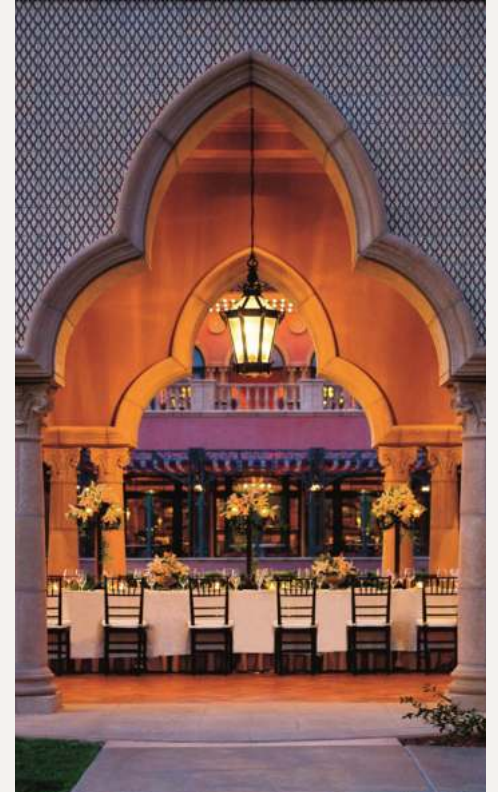
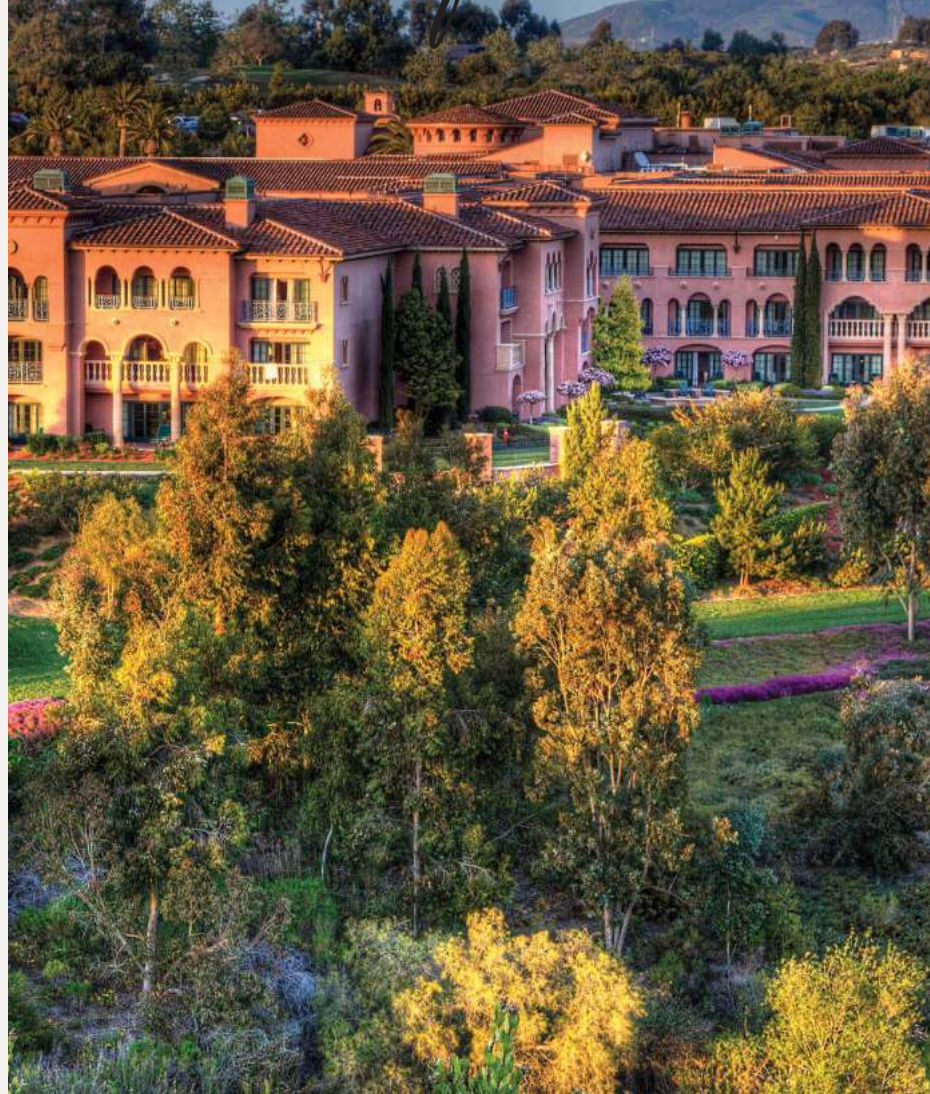


Gathering has never felt so natural.





Magic surrounds us. And it's in our people. Let us create magical experiences nestled in nature, whether it's your company's incentive trip or an inspired corporate retreat. With over 20,000 square feet of indoor meeting space and 20 acres of flexible outdoor space, Fairmont Grand Del Mar can accommodate a full range of events for groups of up to 600 guests.

Along with our expert events team, Fairmont Grand Del Mar entices with limitless experiences in nature, a championship Tom Fazio golf course, a state-of-the-art spa, and exquisite dining.

[Learn More >](#)



RESORT Highlights

- Located on 400 acres alongside Los Peñasquitos Canyon Preserve.
- Tom Fazio-designed golf course spanning 7,160 yards over 380 acres.
- San Diego's only Fifteen-Star resort, spa, and three Michelin-star restaurant, Addison.

LOCATION



We're committed to giving you an authentic, connected experience without compromising your comfort. Enjoy the California Canyon lifestyle and let the fine unwind into fun.

Fairmont Grand Del Mar is a short 25-minute drive from San Diego International Airport.

ACCOMMODATIONS

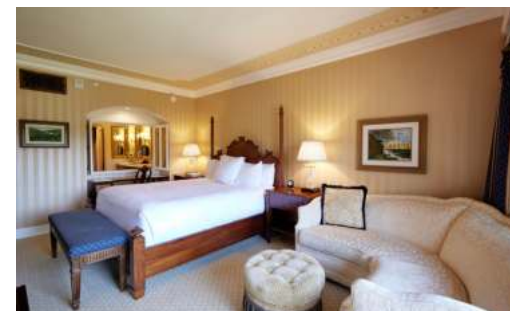
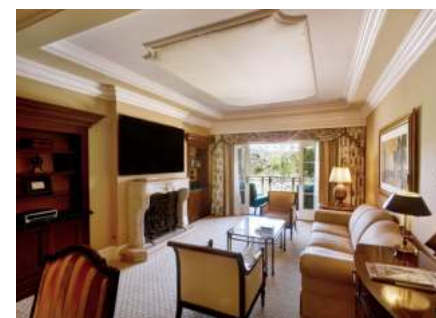
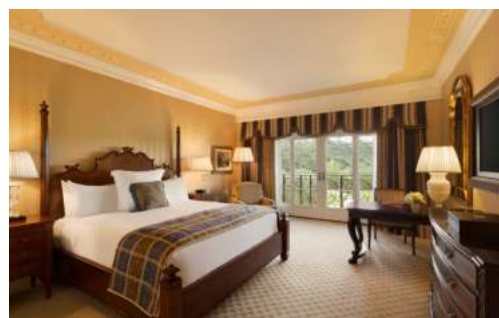
All 234 guest rooms and suites provide you with generous comfort and are complemented by stunning views of lush fairways, sparkling pools, or the breathtaking canyon.

203 Rooms >

Fairmont Room, Deluxe Veranda Room, Signature Poolside Room

31 Suites >

Grand Suite, Paseo Suite, Vista Suite, Del Mar Suite



GROUP ACTIVITIES

Golf

Spa

Archery

Tennis

Pickleball

Yoga

Biking

Hiking

Pool

Horseback Riding



SPA

Immerse yourself in the art of well-being. The Fairmont Spa & Wellness at Fairmont Grand Del Mar welcomes you to a relaxing, restorative experience for your essential self. Featuring our Forbes Five-Star spa, expansive fitness center and movement studio offering complimentary yoga and fitness classes daily for resort guests.





VENUES



MANCHESTER SALON & TERRACE

Detailed woodwork, hand-stenciled ceilings, chandeliers and large arched windows with garden and golf views set the tone. Though the room is large, with 2,300 square feet of inviting space, it feels intimate and private.



CAPELLA

With the antique timbered ceiling and leaded windows, this one-of-a-kind 3,072-square-foot space spells sanctuary. Accents such as ornate chandeliers, polished marble, dark woods, imported stone and stained glass create an artful, exotic ambiance — a little Italian chapel, a little Arabian Nights.



GRAND BALLROOM

This 10,000-square-foot setting offers automobile access, a built-in stage, ceiling heights from 18 to 19 feet and spacious wrap-around foyers, as well as warm woods, imported stone and rich color accents.



WINE ROOMS

Three richly-toned and expertly crafted wine rooms offer a combined 1,925 square feet for connecting. With encased wine bottles, wood-beamed ceilings, brick accents and a sophisticated ambiance, these unique spaces are perfect for an extravagant culinary experience or conversation-starting party.



REFLECTION COURTYARD

Host your group's breakfast, lunch or twilight reception outside surrounded by green hills, manicured gardens, and our serene reflection pool animated with arcing fountains. The outdoor space spans 2,500 square feet, with ample room for conversation and connection in and around the pool and gazebo.



ARIA LAWN

Your event in the 8,160-square-foot Aria Lawn will be accentuated by a dramatic pavilion and views of the resort's golf course and canyon preserve beneath the warm Southern California sun.

SPACES



CAPACITIES

SPACE	DIMENSIONS		SQUARE		HEIGHT		CAPACITIES							
	FEET	METERS	FEET	METERS	FEET	METERS	RECEPTION	THEATER	CLASS-ROOM	BANQUET 60" (1.5 M) 72" (1.8 M)	CRESCENT ROUNDS 60" (1.5 M) 72" (1.8 M)	U-SHAPE	HOLLOW SQUARE	CONFERENCE
BALLROOM														
GRAND BALLROOM	126' x 77'	38.4 x 23.5	9,702	901	18'	5.5	1,360	960	400	700 510	420 360	–	–	–
BALLROOM A	32' x 77'	9.8 x 23.5	2,464	229	18'	5.5	350	192	120	170 120	90 96	70	80	66
BALLROOM A-1, A-3	32' x 21'	9.8 x 6.4	672	62	18'	5.5	90	50	36	40 30	24 24	21	30	24
BALLROOM A-2	32' x 32'	9.8 x 9.8	1,024	95	18'	5.5	120	80	42	60 50	30 32	32	36	28
BALLROOM A-1 + A-2	54' x 32'	16.5 x 9.8	1,728	161	18'	5.5	240	130	76	100 80	60 64	40	50	45
BALLROOM B	60' x 72'	18.3 x 21.9	4,320	401	18'	5.5	600	380	240	360 250	180 160	78	96	62
BALLROOM A+B, B+C	75' x 92'	22.9 x 28	6,900	641	18'	5.5	950	700	330	540 370	324 240	–	–	–
BALLROOM C	32' x 77'	9.8 x 23.5	2,464	229	18'	5.5	350	192	120	170 120	90 96	70	80	66
BALLROOM C-1, C-2	32' x 38'	9.8 x 11.6	1,216	113	18'	5.5	170	100	54	70 60	36 40	36	42	30
BALLROOM FOYERS, COURTYARD & GALLERY														
NORTH FOYER	41' x 26'	12.5 x 7.9	1,066	99	14'	4.3	150	–	–	–	–	–	–	–
NORTH COURTYARD	–	–	1,500	139	–	–	200	–	–	70 60	–	–	–	–
WEST FOYER	48' x 16'	14.6 x 4.9	768	71	14'	4.3	120	–	–	–	–	–	–	–
SOUTH GALLERY	18' x 58'	5.5 x 17.7	1,044	97	8'–13' 5"	2.4–4.0	100	72	42	50 40	24 24	34	32	36
MANCHESTER SALON & TERRACE														
MANCHESTER SALON	40' x 56'	12.2 x 17.1	2,240	208	13'	4.0	250	140	96	150 120	72 72	50	60	38
MANCHESTER TERRACE	25' x 77'	7.6 x 23.5	1,925	179	12' 7"–13' 6"	3.8–4.1	120	–	–	110 100	–	–	–	–

CAPACITIES

SPACE	DIMENSIONS		SQUARE		HEIGHT		CAPACITIES							
	FEET	METERS	FEET	METERS	FEET	METERS	RECEPTION	THEATER	CLASS-ROOM	BANQUET 60" (1.5 M) 72" (1.8 M)	CRESCENT ROUNDS 60" (1.5 M) 72" (1.8 M)	U-SHAPE	HOLLOW SQUARE	CONFERENCE
WINE ROOMS														
BORDEAUX	24' x 24'	7.3 x 7.3	576	54	13'	4.0	50	40	36	40 30	24 24	24	26	18
BURGUNDY	16' x 44'	4.9 x 13.4	704	65	13'	4.0	60	60	42	50 40	30 32	28	30	33
CHAMPAGNE	24' x 24'	7.3 x 7.3	576	54	13'	4.0	50	40	36	40 30	24 24	24	26	18
BORDEAUX, BURGUNDY + CHAMPAGNE	–	–	1,850	172	13'	4.0	160	–	–	110 90	–	–	–	–
WINE CELLAR	13' x 31'	4 x 9.4	400	37	10'	3.0	–	–	–	–	–	–	–	14
CAPELLA														
CAPELLA (CHAPEL)	48' x 64'	14.6 x 19.5	3,072	285	16'–22'	4.9–6.7	400	288	198	240 200	120 128	66	80	54
CAPELLA COURTYARD	29' x 20'	8.8 x 6.1	1,000	93	–	–	125	–	–	50 40	–	–	–	–
MORE OUTDOOR SETTINGS														
ARIA LAWN	60' x 136'	18.3 x 41.5	8,160	758	–	–	1,200	700	–	500 400	–	–	–	–
ARIA PAVILION	27' x 21'	8.2 x 6.4	567	53	17'–19'	5.1–5.8	60	–	–	50 40	–	–	–	22
REFLECTION COURTYARD NORTH	33' x 33'	10.1 x 10.1	1,080	100	–	–	120	–	–	80 60	–	–	–	–
REFLECTION COURTYARD SOUTH	50' x 60'	15.2 x 18.3	3,000	279	–	–	400	–	–	50 50	–	–	–	–
TENNIS PAVILION	27' x 27'	8.2 x 8.2	729	68	14'–16'	4.3–4.9	75	–	–	60 50	–	–	–	22
CANYON TERRACE	134' x 42'	40.8 x 12.8	5,628	523	–	–	120	–	–	70 60	–	–	–	–
GOLF PAVILION	34' x 39'	10.4 x 11.9	1,326	123	7'	2.1	150	–	–	70 60	–	–	–	–

Indulge

with your guests in a collection of alluring culinary offerings. Then reconnect and create unforgettable moments.



WINE & DINE

Six venues—plus poolside and 24-hour in-room dining—let you explore a range of menus.

ADDISON

Southern California's only Five-Star/FiveDiamond restaurant and Relais & Châteaux only three Michelin-star restaurant featuring California gastronomy.

AMAYA

Relaxed, refined ambiance offering Californian cuisine

THE CLUBHOUSE GRILL

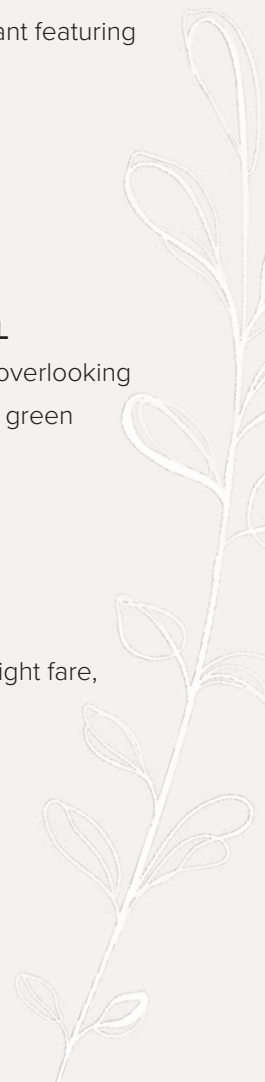
Casual Californian cuisine overlooking The Grand Golf Club's 18th green

CENT'ANNI CAFE

Gourmet coffee shop

LOBBY LOUNGE

Expertly crafted cocktails, light fare, and entertainment





5300 Grand Del Mar Court, San Diego CA 92130

T +1 858 314 2000

F +1 858 314 2001

granddelmar@fairmont.com

granddelmar.com

Fairmont
GRAND DEL MAR