

*Gathering* has never felt so natural.





---

Magic surrounds us. And it's in our people. Let us create magical experiences nestled in nature, whether it's a spectacular charity gala under the stars or an inspired corporate retreat.

With over 20,000 square feet of indoor and 50,000 square feet of outdoor flexible meeting and event space, Fairmont Grand Del Mar can accommodate a full range of events for groups of up to 600 guests—all with a sweeping coastal canyon backdrop.

Along with our expert events team, Fairmont Grand Del Mar entices with limitless experiences in nature, a championship Tom Fazio golf course, state-of-the-art spa, and exquisite dining.

---

[Learn More >](#)





# RESORT *Highlights*

- Located on 400 acres alongside Los Peñasquitos Canyon Preserve.
- Tom Fazio-designed golf course spanning 7,160 yards over 380 acres.

## LOCATION



We're committed to giving you an authentic, connected experience without compromising your comfort. Enjoy the California Canyon lifestyle and let the fine unwind into fun.

Fairmont Grand Del Mar is a short 25-minute drive from San Diego International Airport.

## ACCOMMODATIONS

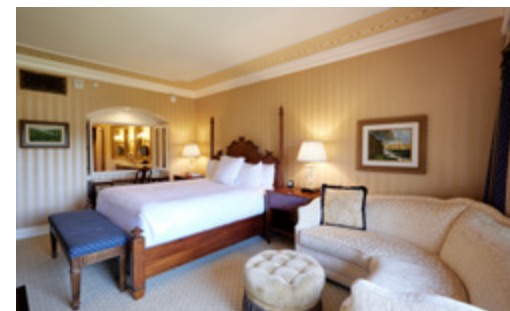
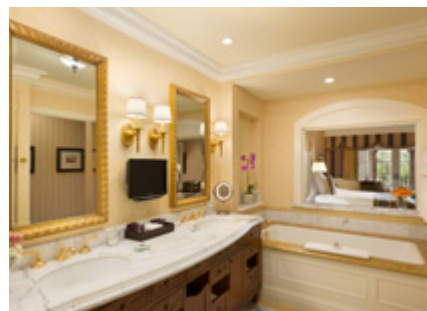
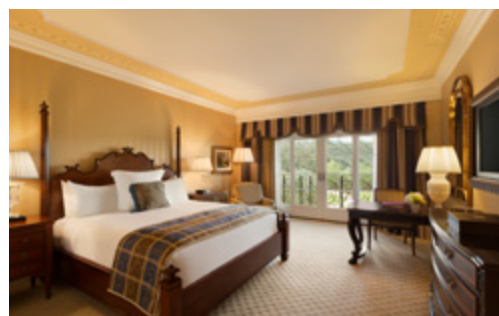
All 234 guest rooms and suites provide you with generous comfort and are complemented by stunning views of lush fairways, sparkling pools, or the breathtaking canyon.

### 203 Rooms >

Fairmont Room, Deluxe Veranda Room, Signature Poolside Room

### 31 Suites >

Grand Suite, Paseo Suite, Vista Suite, Del Mar Suite





## GROUP ACTIVITIES

Golf

Spa

Archery

Tennis

Pickleball

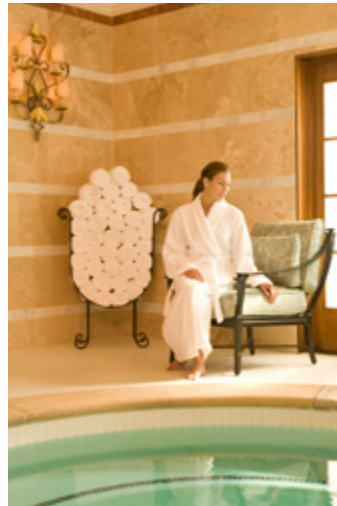
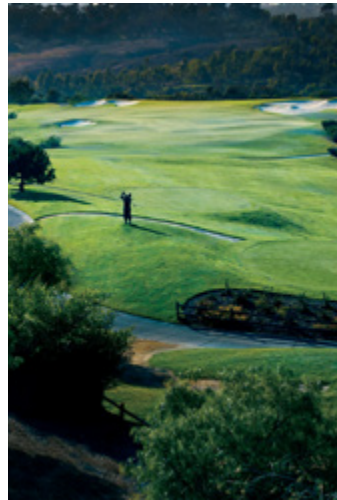
Yoga

Biking

Hiking

Pool

Horseback Riding



## SPA

Immerse yourself in the art of well-being. The Fairmont Spa & Wellness at Fairmont Grand Del Mar welcomes you to a relaxing, restorative experience for your essential self. Featuring our Forbes Five-Star spa, expansive fitness center and movement studio offering complimentary yoga and fitness classes daily for resort guests.









## VENUES



### MANCHESTER SALON & TERRACE

Detailed woodwork, hand-stenciled ceilings, chandeliers and large arched windows with garden and golf views set the tone. Though the room is large, with 2,300 square feet of inviting space, it feels intimate and private.



### CAPELLA

With the antique timbered ceiling and leaded windows, this one-of-a-kind 3,072-square-foot space spells sanctuary. Accents such as ornate chandeliers, polished marble, dark woods, imported stone and stained glass create an artful, exotic ambiance — a little Italian chapel, a little Arabian Nights.



### GRAND BALLROOM

This 10,000-square-foot setting offers automobile access, a built-in stage, ceiling heights from 18 to 19 feet and spacious wrap-around foyers, as well as warm woods, imported stone and rich color accents.



### WINE ROOMS

Three richly-toned and expertly crafted wine rooms offer a combined 1,925 square feet for connecting. With encased wine bottles, wood-beamed ceilings, brick accents and a sophisticated ambiance, these unique spaces are perfect for an extravagant culinary experience or conversation-starting party.



### REFLECTION COURTYARD

Host your group's breakfast, lunch or twilight reception outside surrounded by green hills, manicured gardens, and our serene reflection pool animated with arcing fountains. The outdoor space spans 2,500 square feet, with ample room for conversation and connection in and around the pool and gazebo.



### ARIA LAWN

Your event in the 8,160-square-foot Aria Lawn will be accentuated by a dramatic pavilion and views of the resort's golf course and canyon preserve beneath the warm Southern California sun.





### **CANYON TERRACE**

Whether bathed in the warm Southern California sun or illuminated under a starlit sky, Canyon Terrace provides a versatile backdrop for your next group gathering. Savor the sweet fragrance of spring blossoms, harness summer's energy, or take in the multi-hued splendor of the resort's golf course and canyon preserve any time of year.

The 2,550-square-foot manicured lawn can accommodate receptions of 150 or dinner for up to 100 guests.



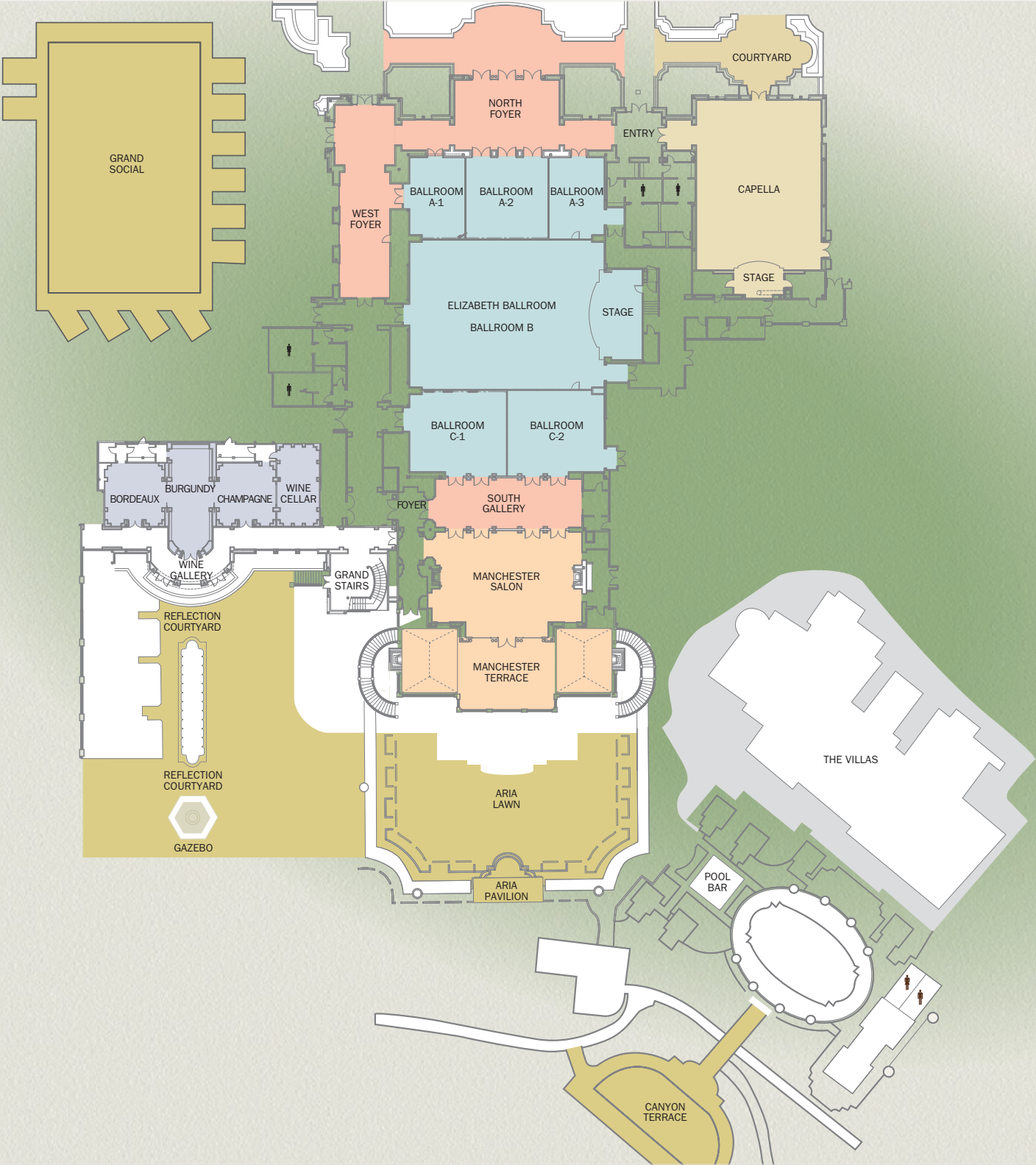
### **GRAND SOCIAL**

Host dynamic group events at our reimagined outdoor lounge, Grand Social, where three distinct levels allow you to effortlessly mix it up and keep the energy flowing.

Start with cocktails on the enchanting third level, transition to a sumptuous banquet on the ground-level lawn, then follow with spirited games of bocce on our new courts late into the evening. Grand Social spans 25,000 square feet and can accommodate receptions for up to 450 or dinner for up to 380 guests.



SPACES



CAPACITIES

SPACE	DIMENSIONS		SQUARE		HEIGHT		CAPACITIES							
	FEET	METERS	FEET	METERS	FEET	METERS	RECEPTION	THEATER	CLASS-ROOM	BANQUET 60" (1.5 M) 72" (1.8 M)	DOUBLE U-SHAPE	U-SHAPE	HOLLOW SQUARE	CONFERENCE

6' PHYSICAL DISTANCING MEETING CAPACITIES

BALLROOM

ELIZABETH BALLROOM	126' x 77'	38.4 x 23.5	9,702	901	18'	5.5	1,360	960	400	700   510	–	–	–	–
BALLROOM A	32' x 77'	9.8 x 23.5	2,464	229	18'	5.5	350	192	120	170   120	90   96	70	80	66
BALLROOM A-1, A-3	32' x 21'	9.8 x 6.4	672	62	18'	5.5	90	50	36	40   30	24   24	21	30	24
BALLROOM A-2	32' x 32'	9.8 x 9.8	1,024	95	18'	5.5	120	80	42	60   50	30   32	32	36	28
BALLROOM A-1 + A-2	54' x 32'	16.5 x 9.8	1,728	161	18'	5.5	240	130	76	100   80	60   64	40	50	45
BALLROOM B	60' x 72'	18.3 x 21.9	4,320	401	18'	5.5	600	380	240	360   250	180   160	78	96	62
BALLROOM A+B, B+C	75' x 92'	22.9 x 28	6,900	641	18'	5.5	950	700	330	540   370	324   240	–	–	–
BALLROOM C	32' x 77'	9.8 x 23.5	2,464	229	18'	5.5	350	192	120	170   120	90   96	70	80	66
BALLROOM C-1, C-2	32' x 38'	9.8 x 11.6	1,216	113	18'	5.5	170	100	54	70   60	36   40	36	42	30

BALLROOM FOYERS, COURTYARD & GALLERY

NORTH FOYER	41' x 26'	12.5 x 7.9	1,066	99	14'	4.3	150	–	–	–	–	–	–	–
NORTH COURTYARD	–	–	1,500	139	–	–	200	–	–	70   60	–	–	–	–
WEST FOYER	48' x 16'	14.6 x 4.9	768	71	14'	4.3	120	–	–	–	–	–	–	–
SOUTH GALLERY	18' x 58'	5.5 x 17.7	1,044	97	8'–13' 5"	2.4–4.0	100	72	42	50   40	24   24	34	32	36

MANCHESTER SALON & TERRACE

MANCHESTER SALON	40' x 56'	12.2 x 17.1	2,240	208	13'	4.0	250	140	96	150   120	72   72	50	60	38
MANCHESTER TERRACE	25' x 77'	7.6 x 23.5	1,925	179	12' 7"–13' 6"	3.8–4.1	120	–	–	110   100	–	–	–	–



CAPACITIES

SPACE	DIMENSIONS		SQUARE		HEIGHT		CAPACITIES							
	FEET	METERS	FEET	METERS	FEET	METERS	RECEPTION	THEATER	CLASS-ROOM	BANQUET 60" (1.5 M) 72" (1.8 M)	CRESCENT ROUNDS 60" (1.5 M) 72" (1.8 M)	U-SHAPE	HOLLOW SQUARE	CONFERENCE
WINE ROOMS														
BORDEAUX	24' x 24'	7.3 x 7.3	576	54	13'	4.0	50	40	36	40   30	24   24	24	26	18
BURGUNDY	16' x 44'	4.9 x 13.4	704	65	13'	4.0	60	60	42	50   40	30   32	28	30	33
CHAMPAGNE	24' x 24'	7.3 x 7.3	576	54	13'	4.0	50	40	36	40   30	24   24	24	26	18
BORDEAUX, BURGUNDY + CHAMPAGNE	–	–	1,850	172	13'	4.0	160	–	–	110   90	–	–	–	–
WINE CELLAR	13' x 31'	4 x 9.4	400	37	10'	3.0	–	–	–	–	–	–	–	14
CAPELLA														
CAPELLA	48' x 64'	14.6 x 19.5	3,072	285	16'–22'	4.9–6.7	250	288	198	240   260	120   128	66	80	54
CAPELLA COURTYARD	29' x 20'	8.8 x 6.1	1,000	93	–	–	125	–	–	50   40	–	–	–	–
OUTDOOR MEAL SETTINGS														
ARIA LAWN	60' x 136'	18.3 x 41.5	8,160	758	–	–	600	700	–	500   400	–	–	–	–
ARIA PAVILION	27' x 21'	8.2 x 6.4	567	53	17'–19'	5.1–5.8	60	–	–	50   40	–	–	–	22
REFLECTION COURTYARD	33' x 90'	13.7 x 13.7	4,000	370	–	–	250	–	–	80   80	–	–	–	–
GRAND SOCIAL	115'x137'	–	23,000	2,136	–	–	600	–	–	450   500	–	–	–	–
CANYON TERRACE	90'x114'	–	3,650	339	–	–	250	–	–	100	–	–	–	–
TENNIS PAVILION	27' x 27'	8.2 x 8.2	729	68	14'–16'	4.3–4.9	75	–	–	60   50	–	–	–	22
GOLF PAVILION	34' x 39'	10.4 x 11.9	1,326	123	7'	2.1	150	–	–	70   60	–	–	–	–

# Indulge

with your guests in a collection of alluring culinary offerings. Then reconnect and create unforgettable moments.



## **WINE & DINE**

Six venues—plus poolside and 24-hour in-room dining—let you explore a range of menus.

### **ADDISON**

Southern California's only Five-Star/FiveDiamond restaurant and Relais & Châteaux only three Michelin-star restaurant featuring California gastronomy

### **AMAYA**

Relaxed and refined ambiance offering French brasserie menu with a modern twist

### **THE CLUBHOUSE GRILL**

Casual Californian cuisine overlooking The Grand Golf Club's 18th green

### **CENT'ANNI CAFE**

Gourmet coffee shop

### **LOBBY LOUNGE**

Expertly crafted cocktails, light fare, and entertainment





5300 Grand Del Mar Court, San Diego CA 92130

T +1 858 314 2000

F +1 858 314 2001

[granddelmar@fairmont.com](mailto:granddelmar@fairmont.com)

[granddelmar.com](http://granddelmar.com)

*Fairmont*  
GRAND DEL MAR